



By Capt. Saurabh Mathur
CEO, CMTL

Importance of Logistics Management


- Logistics management has direct impact on company's bottom line.
- As freight volume grows and transportation becomes more complicated, the need for logistics management rises.
- The logistics cost in India is estimated at over Rs 4.5 trillion & over 14.4% of GDP, making products costlier and export uncompetitive.
- Demand for warehousing space will reach 20 million sq. ft. in 2018.
- Logistics industry is expected to reach over \$ 2 billion by 2019 owing to the progress in retail, e-commerce and manufacturing sectors.

FACTS

- **Sea:** 12 Major & 187 non major ports handle 95% by vol. & 70% by value of country's foreign trade.
- **Road:** 3.83 mill Km long roads are 2nd largest in world after China's.
- **Rail:** accounts for 26% of total freight carrying about 1.1 bill tonnes.
- **Air:** Accounts for 2% by vol & 30% by value of logistics.
- **Warehousing:** Accounts for 5% of India logistics market.



What's Done Well

- Diesel de-regulation:
- Big thrust on highways built up.
- Dedicated freight corridor.
- Implementation of GST
- Make in India Initiative.
- Various initiatives for Setting fast clearances. – **E. sealing.**
- Boost for Pharma 
- 6 Lk Crore committed towards infrastructure development this fin year.
- Setting up of Logistics Division in commerce department.
 - a. Bring down the logistics Cost to less than 10% of GDP
 - b. Develop a Logistics IT backbone: To bring LPI down to 15 from 35.
 - c. Reduce cargo release time.
- Logistics sector will provide 3 mill jobs.

Are we ready to handle the growth ?

- Lack of right inter-modal transport: Costly roadways commanding 65% of freight & mere 26% for railways is faulty system.
- Lack of Skilled Manpower – Education System.
- Lack of Integrated I.T. infrastructure.
- Lack of Coordination between various logistics stakeholder ministries & elimination of bureaucracy.

(Railways, Road transport & highways, Shipping, Civil Aviation, Commerce & industries, Finance, Home Affairs)

Ideally Logistics division could be under ministry of commerce & industry. It's a ministry which deals with trade.

- Lack of Standardization: We must increase the speed & reduce the cost.

Additionally for Hyderabad

- **Transport:** Freight corridor, Double stacking, High transit time loosing in competitive market to other countries, High congestion, Single Line,, fragmented electrification, priority for freight rakes.
- **Policies to develop industries:** Negligible increase in export volume over a decade, fragmented industrial belts with restriction of approach, lack of consolidation.
- **Technology:** Digitization, A.I. in transport, 3D printing, Big Data.
- **Skill & Education System:** As compared to developed world.
- Change Management
- Lack of representation from a few major Carriers.



Continental
Multimodal Terminals Ltd



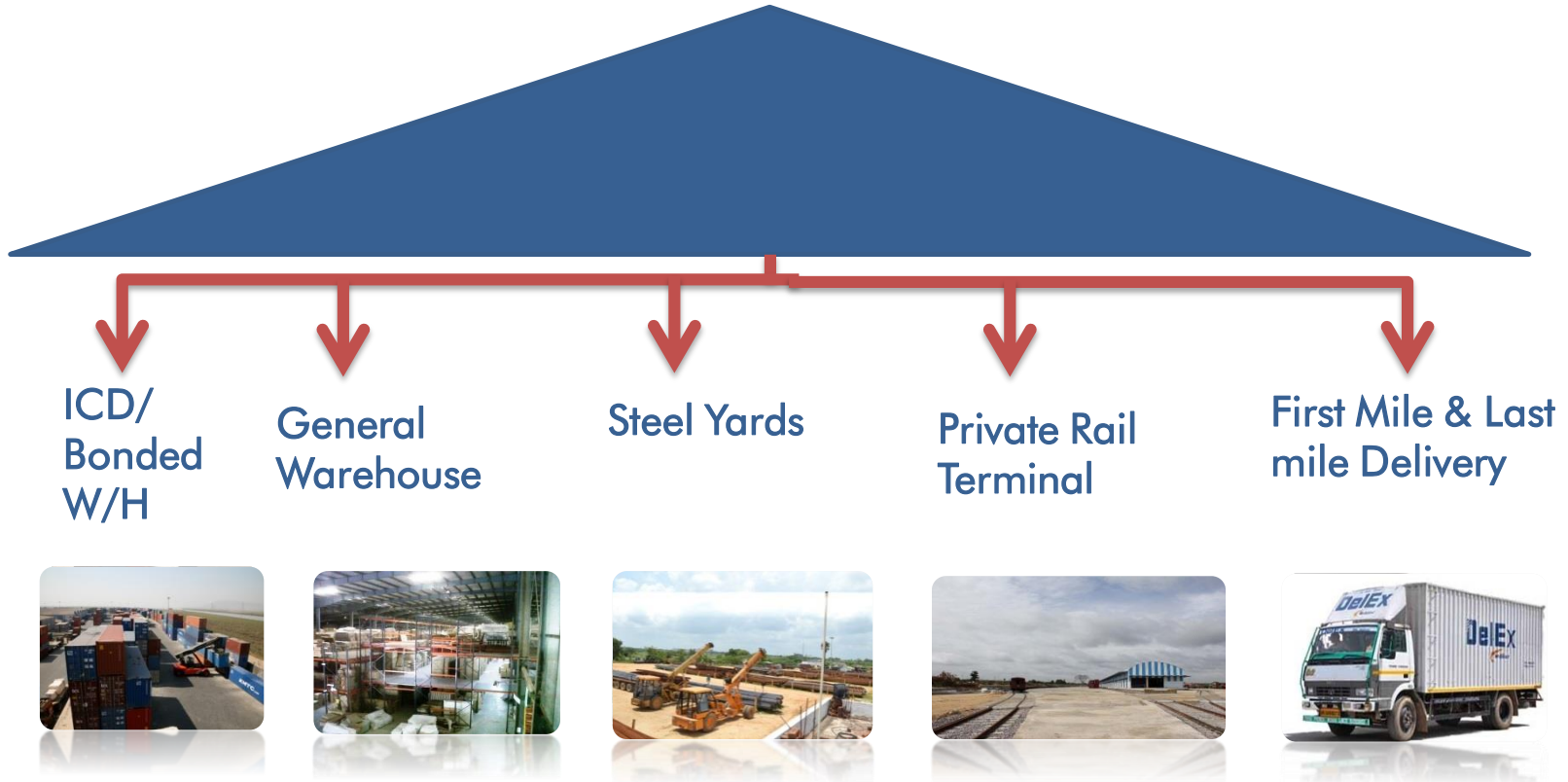
How can
we help
you?



Continental
Multimodal Terminals Ltd



We provide Integrated Logistics solutions under One Roof



Providing all facilities under one roof will reduce the multiple handlings , transit losses & cost. All these services under one roof help maintain Service quality till it reaches the customer.



Continental
Multimodal Terminals Ltd

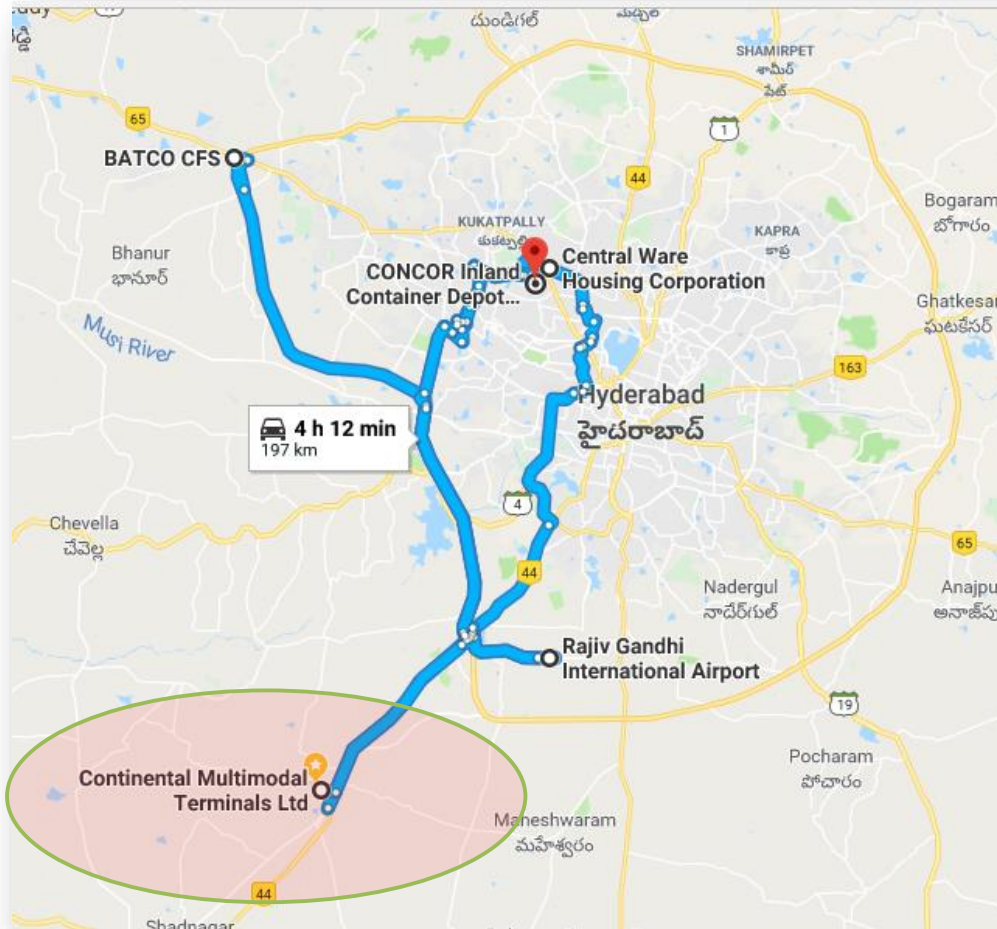
A DP Word's company

CMTL is a Multimodal Logistics Park at Thimmapur & Nation's first multi user Private Freight Terminal (PFT) on Indian Railway network.

CMTL comply to international standards of ISO 9001, CTPAT, OSHAS 18001:2007 .

Its a joint venture of Continental Warehousing (Nhava Seva) Ltd (CWCNSL) and KRIL. While

CWCNSL is a joint venture between majority shareholder of 90% by **DP Word's** Hindustan Infralog Pvt Ltd.



LOCATION ADVANTAGE

- In vicinity to dedicated & expanding industrial Belt.
- 24 x 7 access
- No road restriction
- 35 KM from City centre
- Connects to ORR via Bangalore Highway
- 50 Acre facility
- Ample Space to expand
- EXIM & Domestic warehousing

Infrastructure

- ✓ Total Facility area is about 46 acres
- ✓ 4 Warehouse (3 x 50000 sq ft, 1 x 120000 sq ft,) ICD, PFT, Rice Godown, Steel/General purpose.
- ✓ 3 Rail Sidings with TXR facility.
- ✓ Additional Warehouses in vicinity could be taken on Lease.
- ✓ Admin Block with offices for CHA
- ✓ Full Custom officers located within facility.
- ✓ Canteen Facility.
- ✓ Rooms for Rest & Night Stay.
- ✓ Inland Container Depot in 7 Acr of land
- ✓ Steel Yard facilities in about 4 ac of land
- ✓ CCTV, Security personal, Fire Hydrants & Extinguishers




Equipment & Facility

- Warehouse with Overhead Gantry.
- 3 Reach Stackers
- 4 Cranes (3 x 80T, 1 x 60T)
- 2 Overhead Gantry for Steel Handling
- 8 Hydra
- 2 Heavy Forklifts (12T & 40T)
- 2 Small Forklifts (3T)
- 16 Vehicles
(6 Body Trucks, 2 x 40'flat, 8 x 20'flat)
- Rail In-Motion weigh bridge
- 2 Vehicle weighbridge



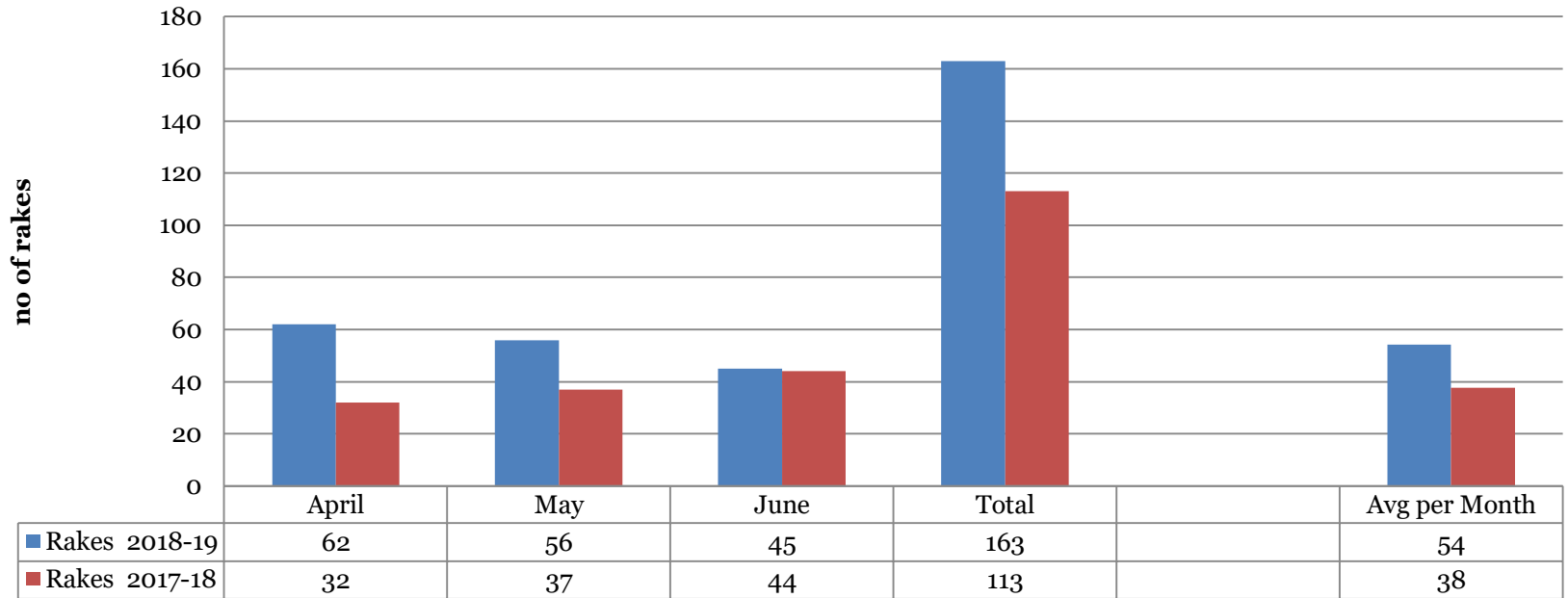
KEY Advantages of Multi-modal Facility

- A **DP WORLD**  company – recent change.
- 3 Rail siding - Rail connectivity to Gateway ports & any location.
- Custom Road Bond for movement to any Gateway ports across India & from Chennai & Mumbai Ports by road to CMTL.
- No road restriction – Adjacent to highway.
- Vicinity to several industries like: *Bakery Products, Manufacturing MNCs, Paper Products, Various minerals, Rice & Agro, Solar, Pharma etc.*
- Ample Warehouse & Open Yard space with option to expand.
- Dedicated Custom officials facilitating same day custom clearance .
- In-house Canteen, rest area, recreational activities & awards.
- Daily Free transport from city & return.
- Office space on nominal rent.

Edge

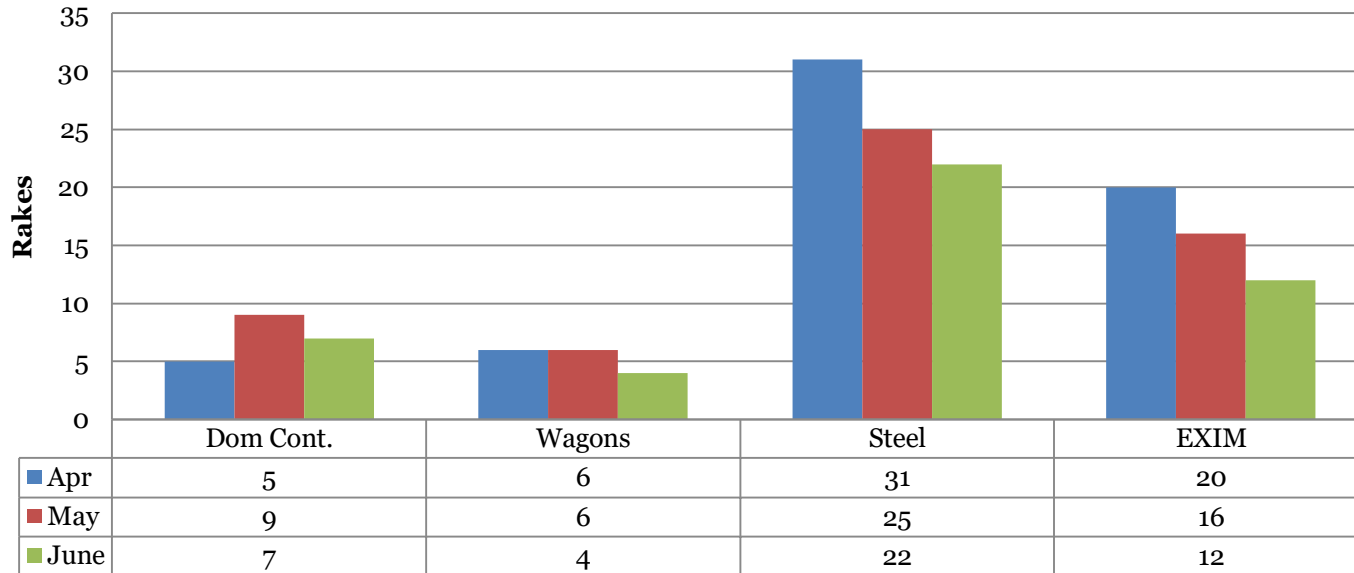
- Warehouse: Bonded, Export, Import L.C.L, general with option to add specific need warehouse.
- Ample Reefer Plugs.
- Ample open space for ODC & Project Cargo.
- Immediate filing of IGM.
- Complete Custom clearance with all relevant officers availability.
- Ample Empty container storage for immediate Export use.

Growth



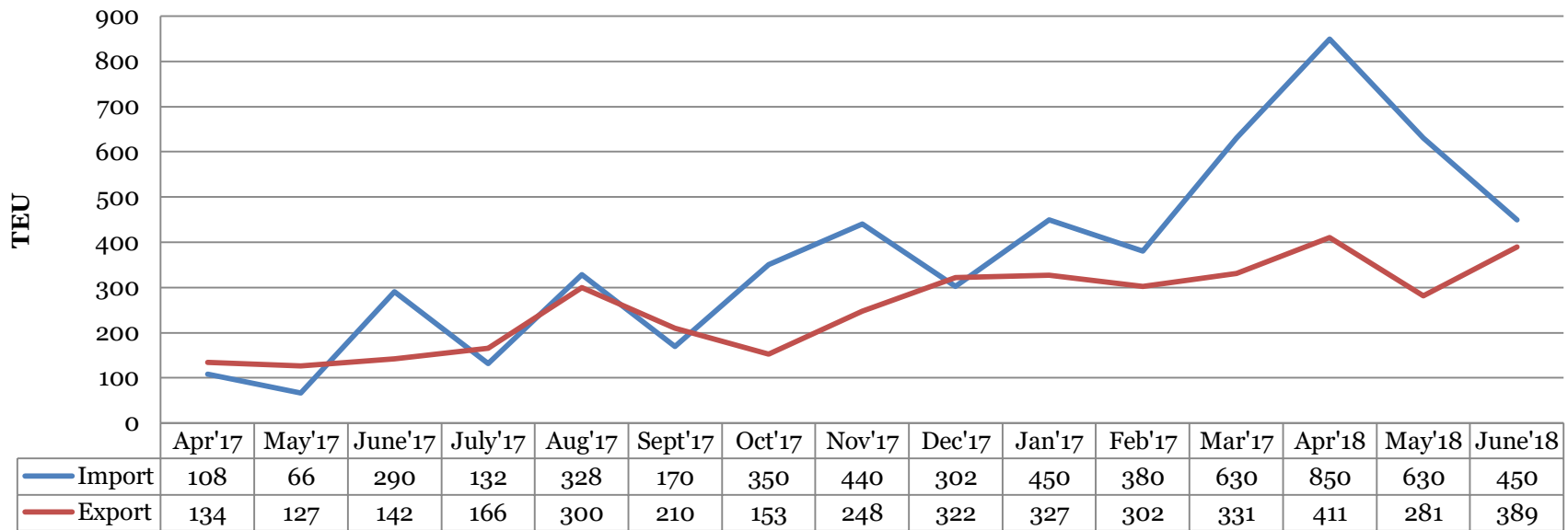
- Comparison of Rakes between 2017-18 & 18-19 for the same period suggests an increase of approx. 30%
- Average numbers of rake per month have increased to 54 this year from 38 the previous year.

Bifurcation of Business



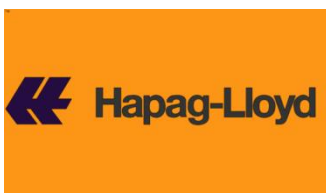
- Approx. 50% Steel , 20% domestic & 30% is Exim business

Growth Pattern EXP & IMP



- There is credible improvement in business from previous year.
- First quarter 2018 gets a sharp 250% jump in comparison to 2017 for same period.

Key Shipping Lines & NVOCC operating at facility



Key Customers Operating from Facility





Continental
Multimodal Terminals Ltd

*Thank
you*

